

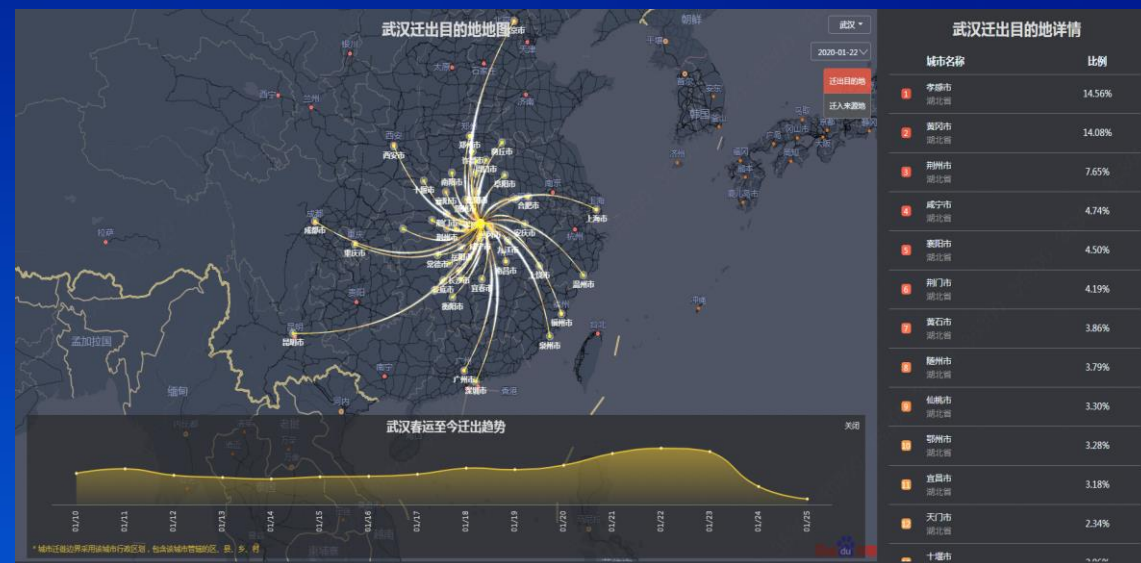
# Human Temperature Measurement Solution

Technology  
1/30/2020



# Background

At the end of 2019, a new coronavirus outbreak broke out in Wuhan, China, which is characterized by human-to-human transmission, medical staff infection and community transmission. The disease has spread to China and around the world.



# Scenarios

Epidemic Period



Airport



Railway Station



Hospital



School

General Period



Entry and Exit



Kitchen



Kindergarten



食安全



全感知



全计算

# Status Analysis

## Human Temperature Measurement



### Key Function ▶

#### Preliminary Screening

#### Temperature Record

### Current Status ▶

- Low efficiency of thermometer and infrared detection gun
- Manual temperature measurement workload, high risk

- Manual recording is inefficient
- Personnel information collection is difficult

### Requirement ▶

- Non-contact automatic temperature measurement
- Accurate, fast and multi-person detection

- Record abnormal temperature information automatically
- Collect abnormal personnel portrait automatically

# Values

---

## High Accuracy

$\pm 0.3^{\circ}\text{C}$  (with blackbody)

## High Efficiency

Non - contact temperature detection, quick screening  
Long distance, wide coverage and multi – person detection

## Low Cost

Automatic early warning mechanism, saving a lot of  
manpower and reduce the risk of cross-infection

## Strong Adaptability

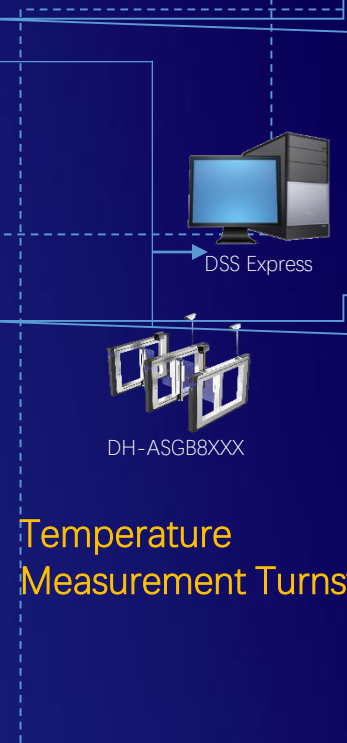
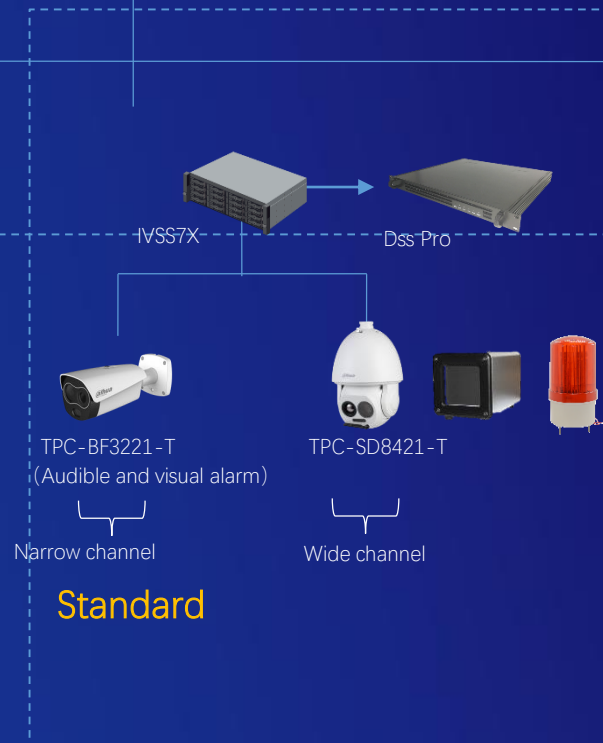
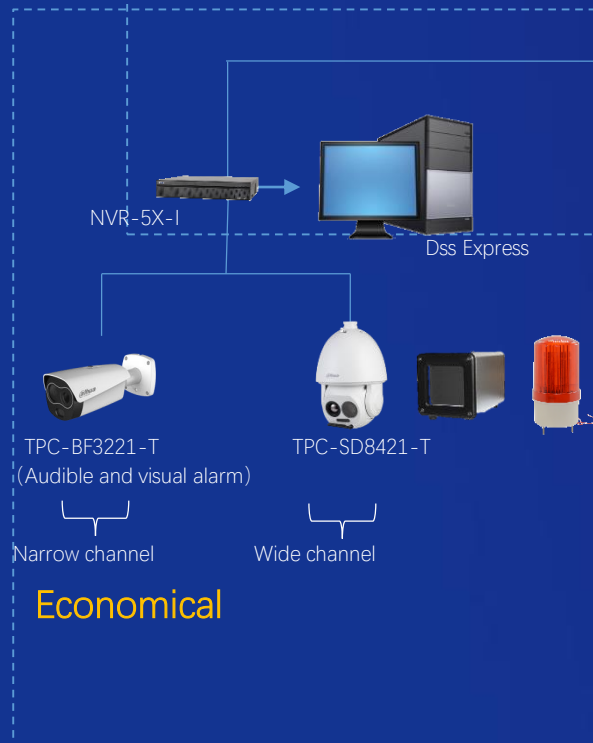
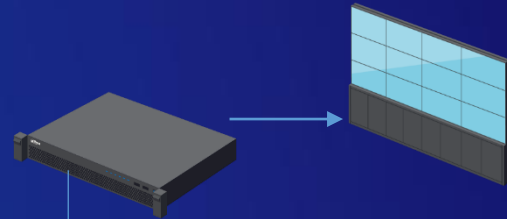
Applied to small scenes such as entrances and exits  
Large scenes such as airports and railway stations with dense personnel

## Dating Back

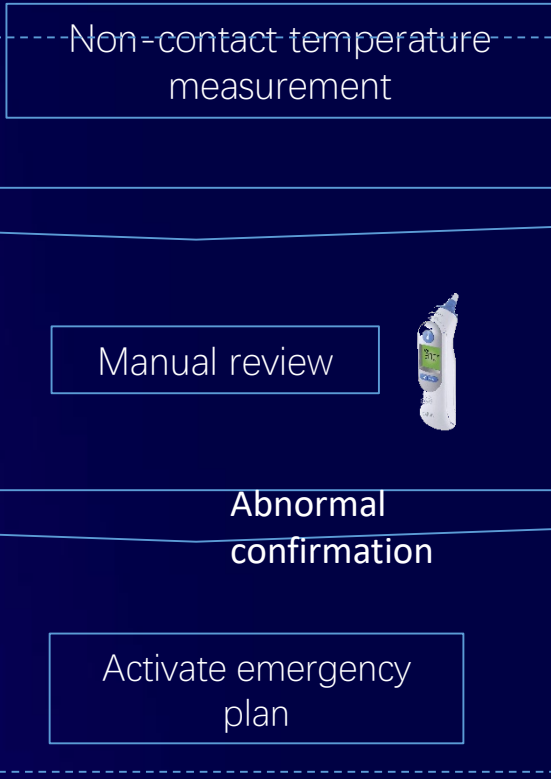
Realize the historical data backtracking, data analysis and so on  
combined with the platform

# Solution

Monitoring center

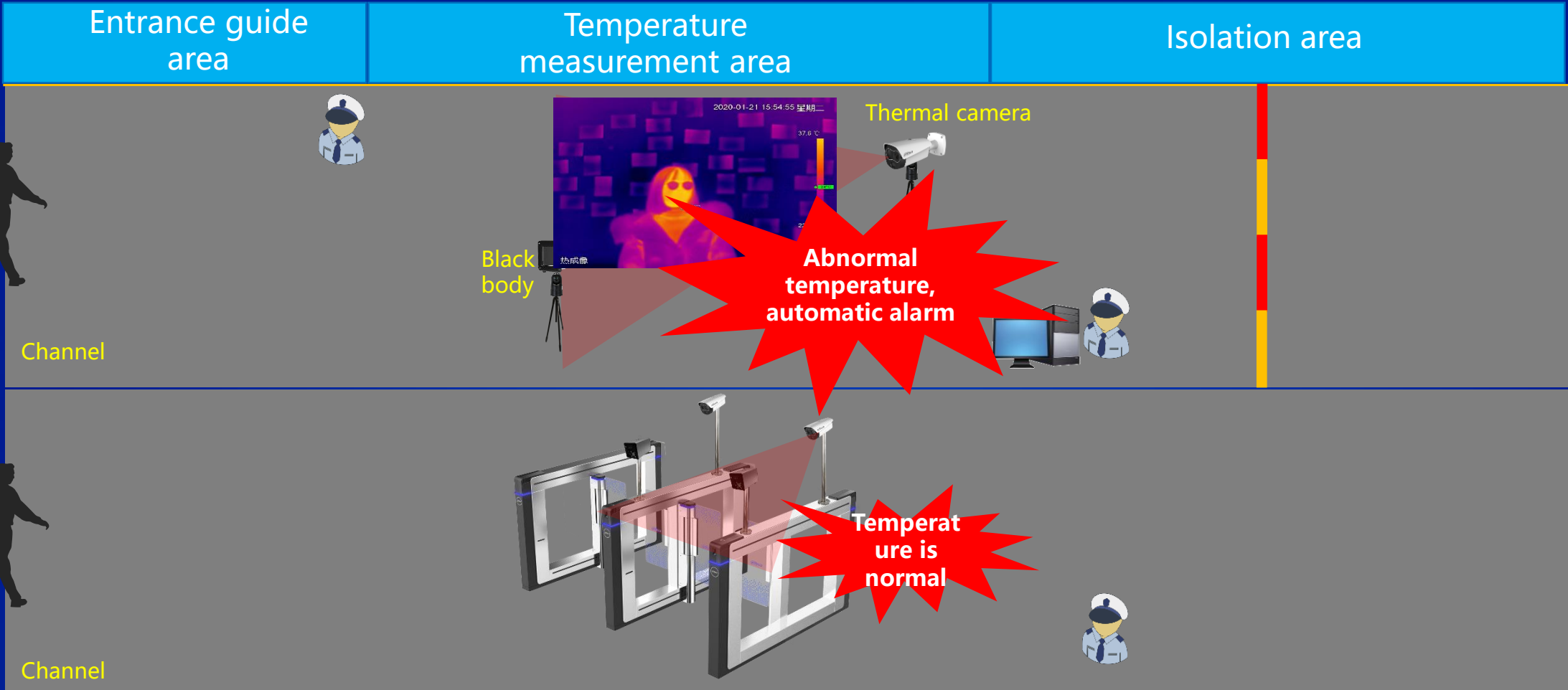


## Process





# Solution



全感知

云计算

# Products



**Thermal Network Value Hybrid Bullet Camera(Lite series)  
DH-TPC-BF3221-T**

Vox uncooled focal plane detector  
Resolution: 256\*192  
Spectral Range: 8 $\mu$ m~14 $\mu$ m  
Thermal lens: 3.5mm/7mm (optional)  
NETD: <50 mK  
Visible: 1/2.8"CMOS, 1080P  
Visible lens: 4mm/8mm(optional)  
Alarm: Built-in white light warning light, horn  
Temperature measurement range: 30°C ~ 45°C,  
Temperature measurement accuracy :  $\pm 0.3^{\circ}\text{C}$  ,  
with blackbody  
 $\pm 1^{\circ}\text{C}$  , without blackbody



**Thermal Network Hybrid Speed Dome Camera  
DH-TPC-SD8421-T**

Vox uncooled focal plane detector  
Resolution : 400\*300  
Spectral Range : 8~14  $\mu$ m  
Thermal lens : 7.5mm/13mm  
NETD : <40 mK  
Visible : 1/2.8"CMOS, 1080P  
Visible lens : 4.95~198mm, 40X  
IR distance: 100m  
Temperature measurement range : 30°C ~ 45°C ,  
Temperature measurement accuracy :  $\pm 0.3^{\circ}\text{C}$  ,  
with blackbody

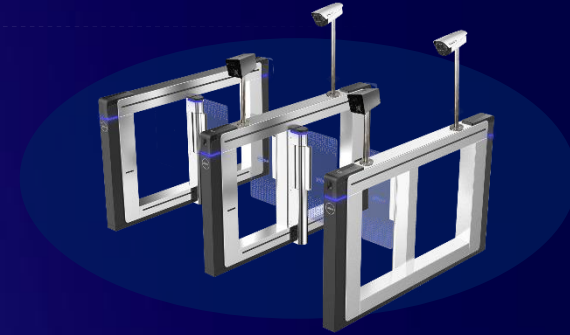


# Products



**Blackbody  
DH-TPC-HBB1**

Working temperature : 40.0°C ( environment  
temperature +5.0°C ~ 50.0°C )  
Temperature resolution : 0.1°C  
Temperature measurement accuracy :  $\pm 0.2^\circ\text{C}$  (Single  
point)  
Temperature stability :  $\pm ( 0.1 \sim 0.2 )^\circ\text{C}/30\text{min}$   
Effective emissivity :  $0.97 \pm 0.02$   
Power: 220VAC 50Hz  
Ambient temperature and humidity : 0~40°C/  
 $\leq 80\%RH$

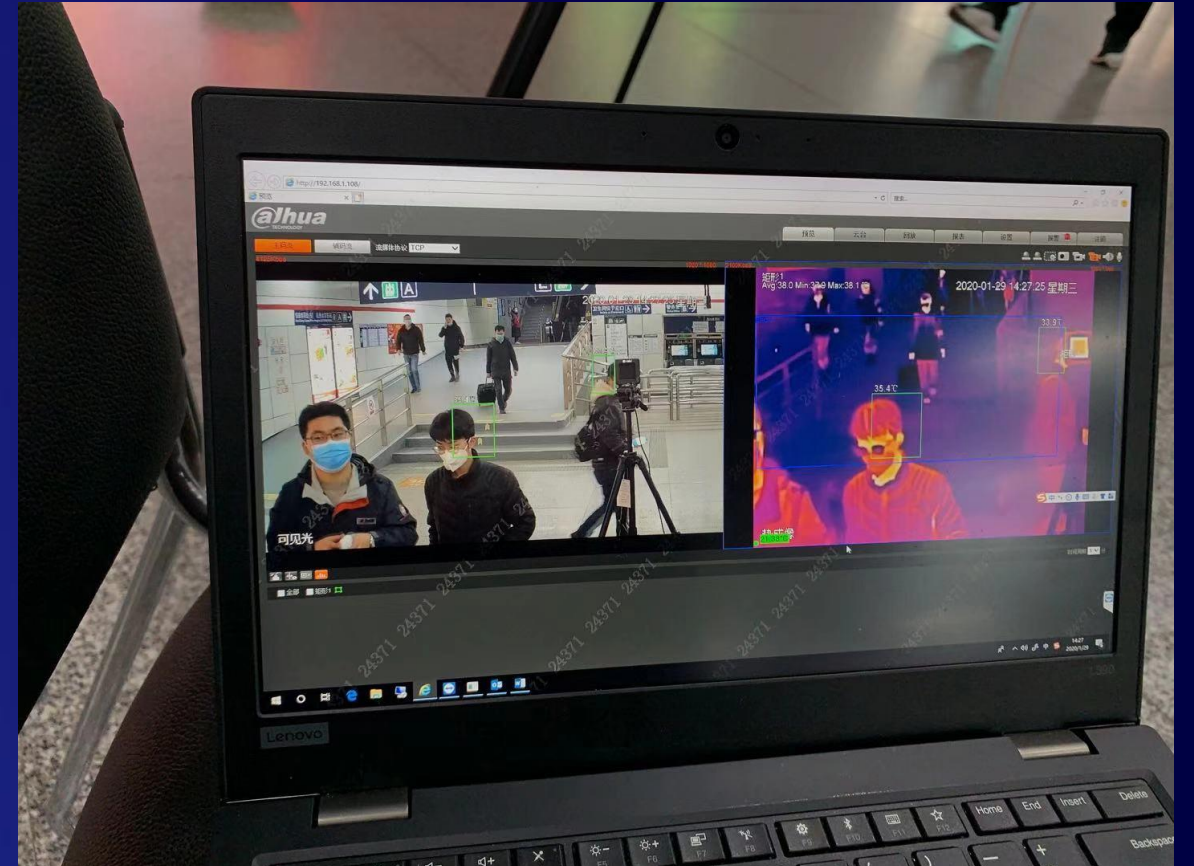


**Temperature measurement turnstiles  
DH-ASGB8XXX**

Human temperature measurement module :  
Temperature measurement range: 30°C ~ 45°C ,  
Temperature measurement accuracy:  
 $\pm 0.3^\circ\text{C}$  , with blackbody  
 $\pm 1^\circ\text{C}$  , without blackbody  
Features: face detection, face temperature measurement, sound  
and light warning

Turnstiles module:  
Pedestal material: 304 stainless steel, thickness 2.0mm  
Motor type: Servo motor  
IR Light Detectors: 30 pairs  
Lane width : 600mm~1000mm  
Barrier material: Acrylic glass  
Features: face recognition, IC card, qr code, fingerprint and  
other optional  
Power: AC 100-240V/50~60HZ

# Success Case



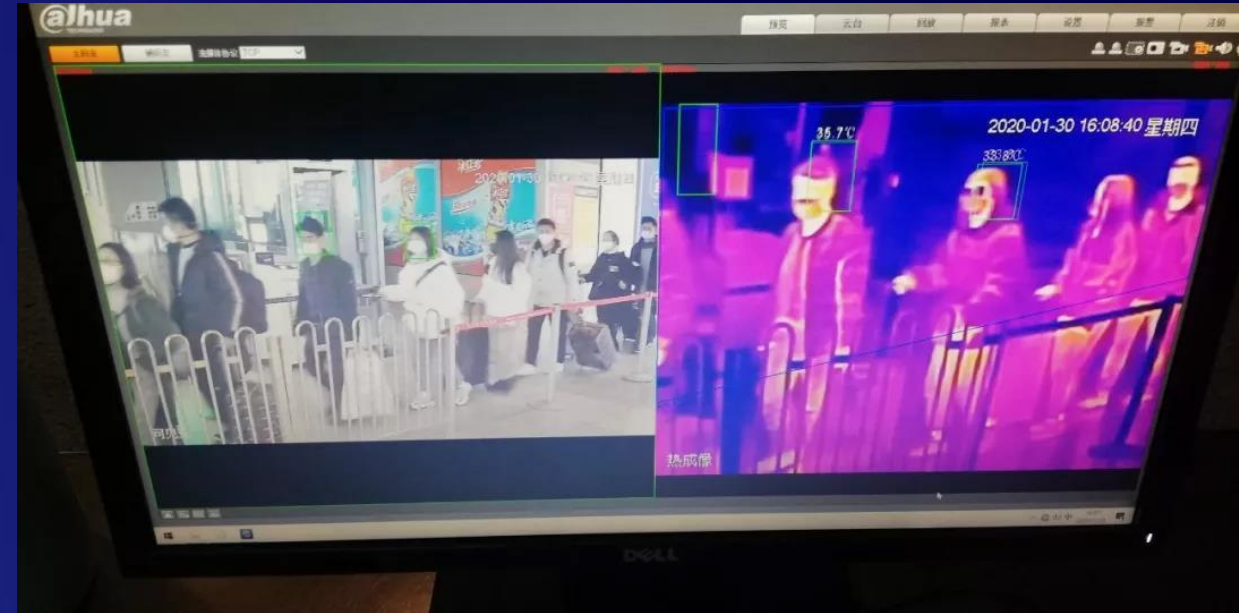
Hangzhou metro line 1 adopts Dahua thermal human temperature measurement solution at Hangzhou east railway station, one of the largest transportation hubs in Asia, realizing remote non-contact temperature measurement with high temperature



# Success Case



**Shanghai Railway Station**



Dahua thermal human temperature measurement solution helps Shanghai railway station, one of the busiest railway station in the world, to realize rapid human body temperature measurement with dense crowds and find people with abnormal body